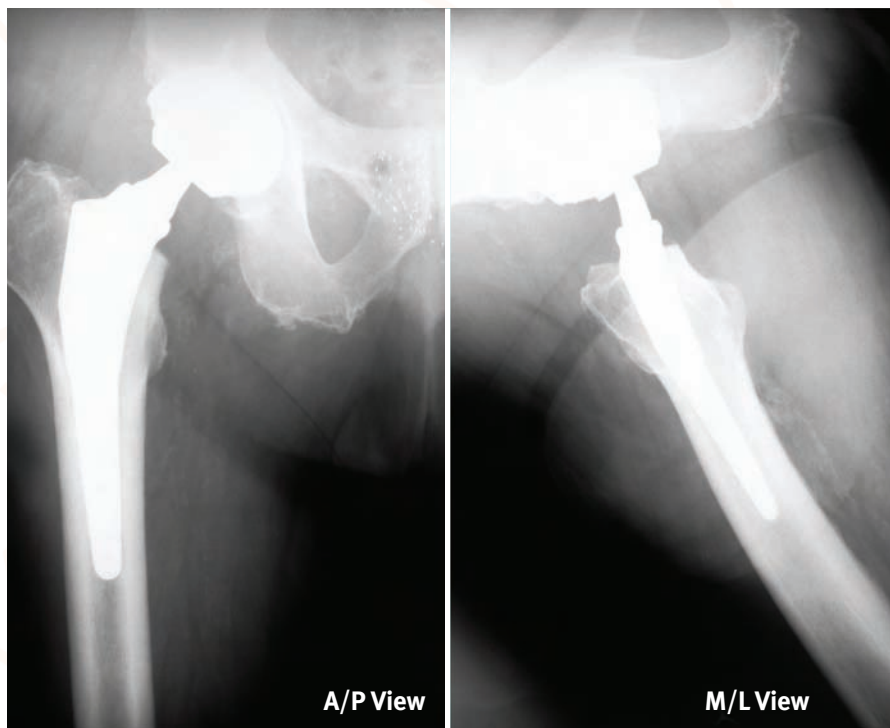


## Case Study 4 – Conclusions



Case study 4 postoperative x-ray

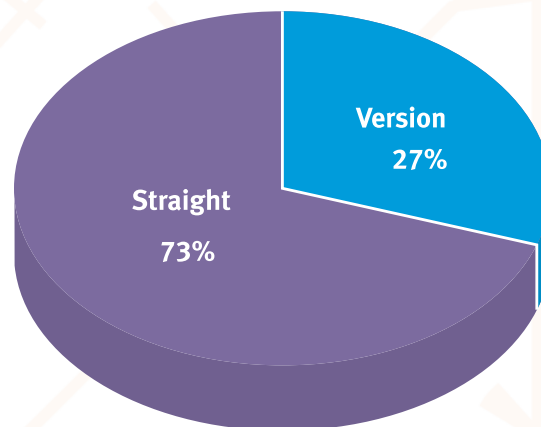
### Summary

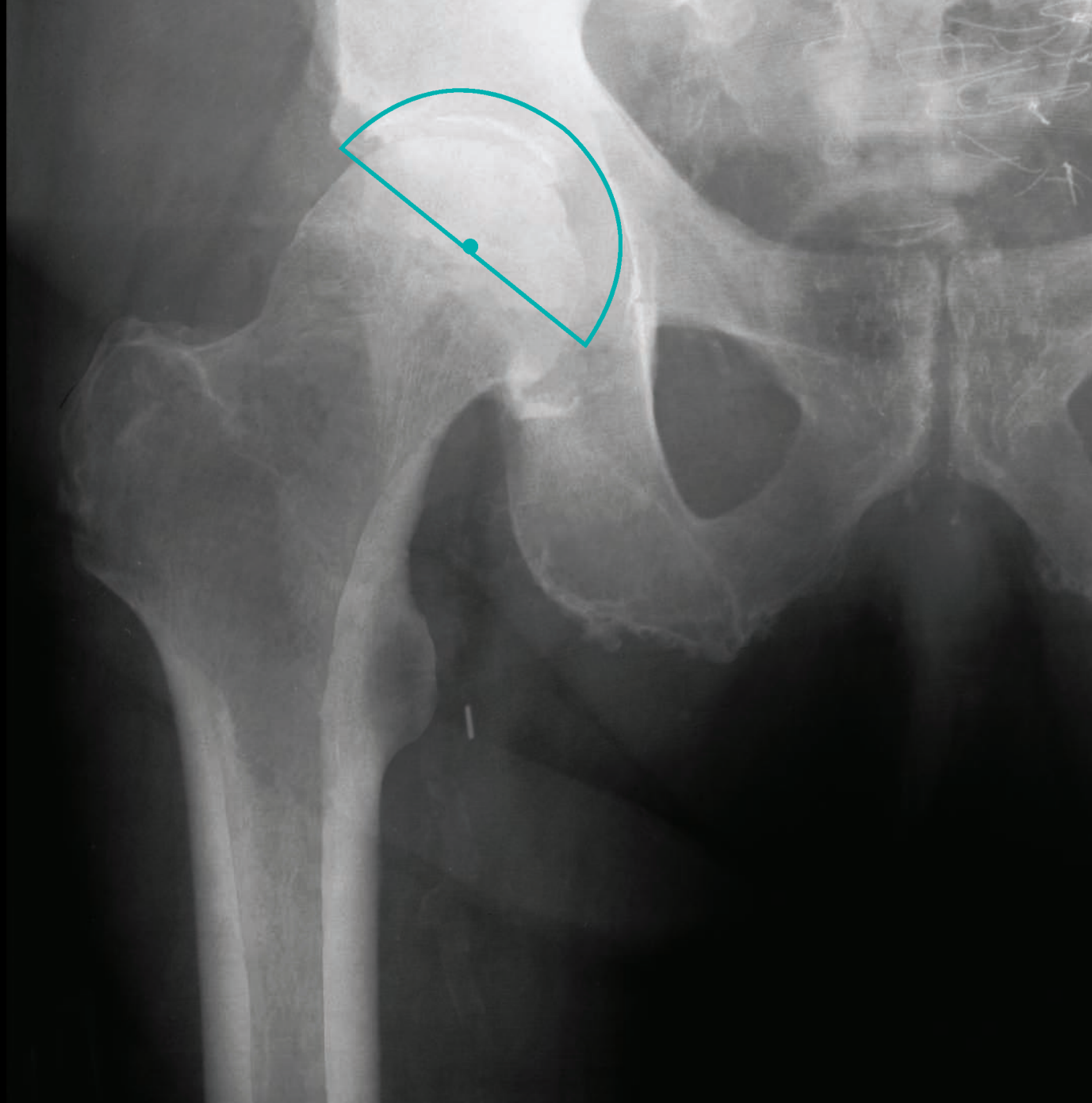
- Templated to +4 leg length/Standard offset (G Neck)
- Hip contracture limits internal rotation for pre-op x-ray templating
- Neck version not fully appreciated until neck osteotomy is performed
- Implant +4 leg length/Extended offset/Anteverted (CC Neck) to optimize offset and range of motion without affecting leg length

### Conclusion

- Independent offset adjustment to optimize stability without affecting leg length
- Anteverted/retroverted neck to optimize stem fit in femur and total version of hip reconstruction for desired range of motion
- Nearly 30% of over 6,000 consecutive *Kinectiv* Technology implantations are anteverted or retroverted neck constructs<sup>1</sup>

### Neck implant distribution

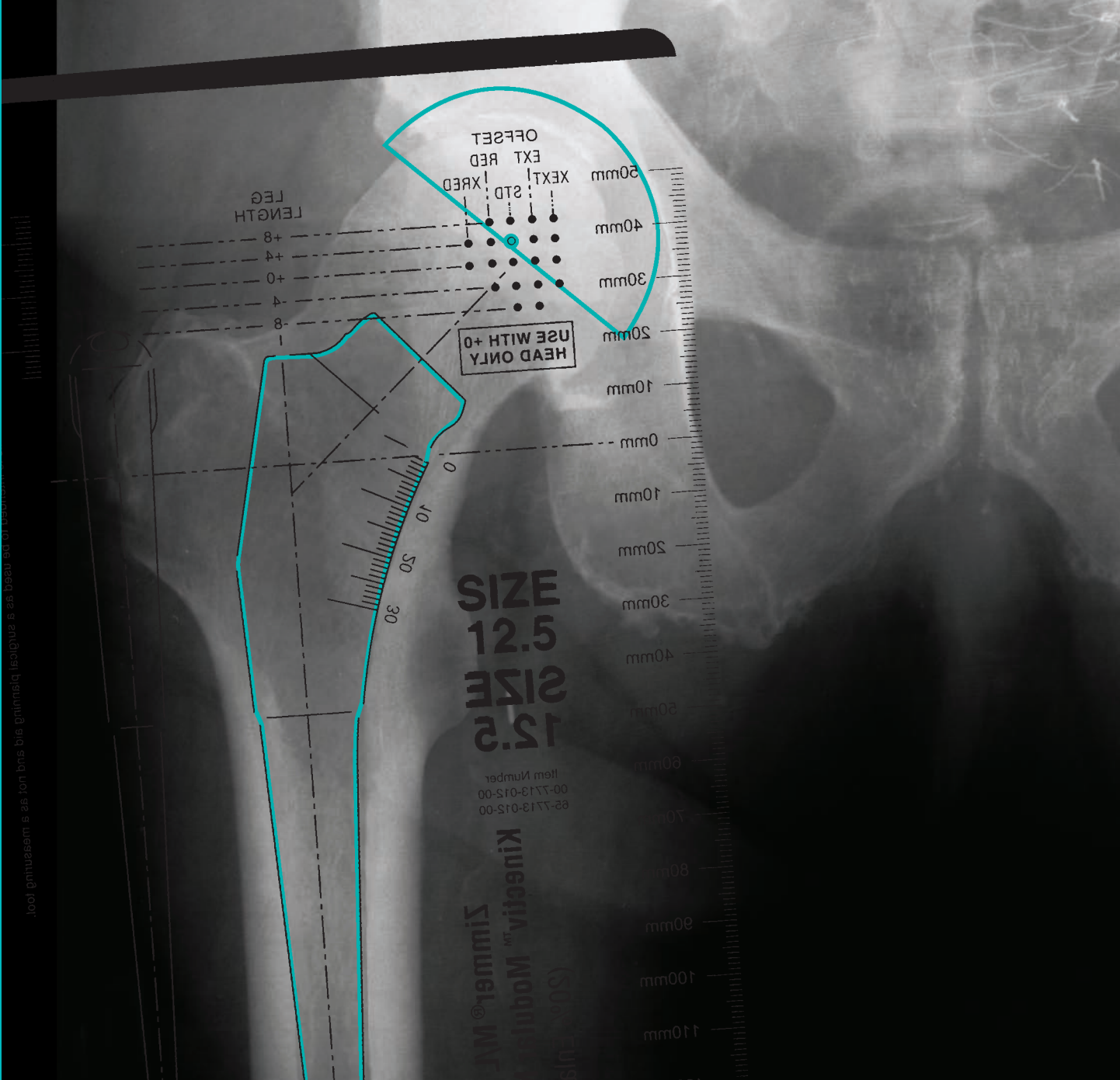


**Anteverted Neck****Clinical Information**

Age	63
Gender	Female
Preoperative Diagnosis	Osteoarthritis
Operative Side	Right
Procedure	MIS Posterior

**Implant Information**

Acetabular Cup (Size)	<i>Trilogy Acetabular Cluster Holed Shell (58mm)</i>
Femoral Implant (Size)	
Femoral Head Implant	
<i>Kinectiv Neck</i>	



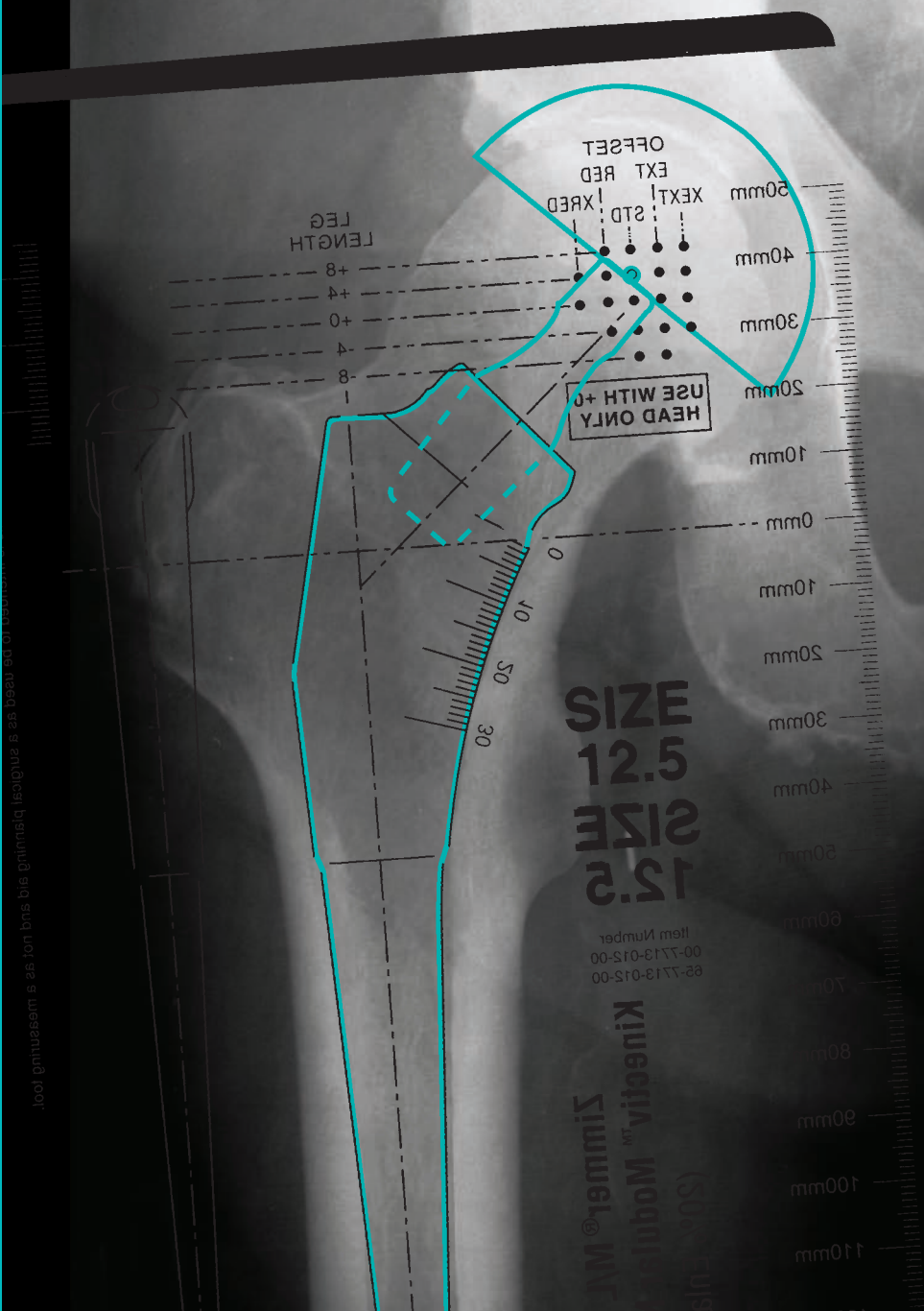
**Anteverted Neck**

**Clinical Information**

Age	63
Gender	Female
Preoperative Diagnosis	Osteoarthritis
Operative Side	Right
Procedure	MIS Posterior

**Implant Information**

Acetabular Cup (Size)	Trilogy Acetabular Cluster Holed Shell (58mm)
Femoral Implant (Size)	M/L Taper with <i>Kinectiv</i> Technology (Size 12.5)
Femoral Head Implant	
<i>Kinectiv</i> Neck	



**Anteverted Neck**

**Clinical Information**

Age	63
Gender	Female
Preoperative Diagnosis	Osteoarthritis
Operative Side	Right
Procedure	MIS Posterior

**Implant Information**

Acetabular Cup (Size)	Trilogy Acetabular Cluster Holed Shell (58mm)
Femoral Implant (Size)	M/L Taper with <i>Kinectiv</i> Technology (Size 12.5)
Femoral Head Implant	Ceramic <i>BioloX</i> <sup>®</sup> †† Femoral Head 36mm, +0
<i>Kinectiv</i> Neck	+4 Leg Length/Extended Offset (CC neck)*

\*Extended offset and anteverted neck (CC neck) selected intraoperatively to optimize joint stability without changing leg length

††Trademark of Ceram Tec AG