

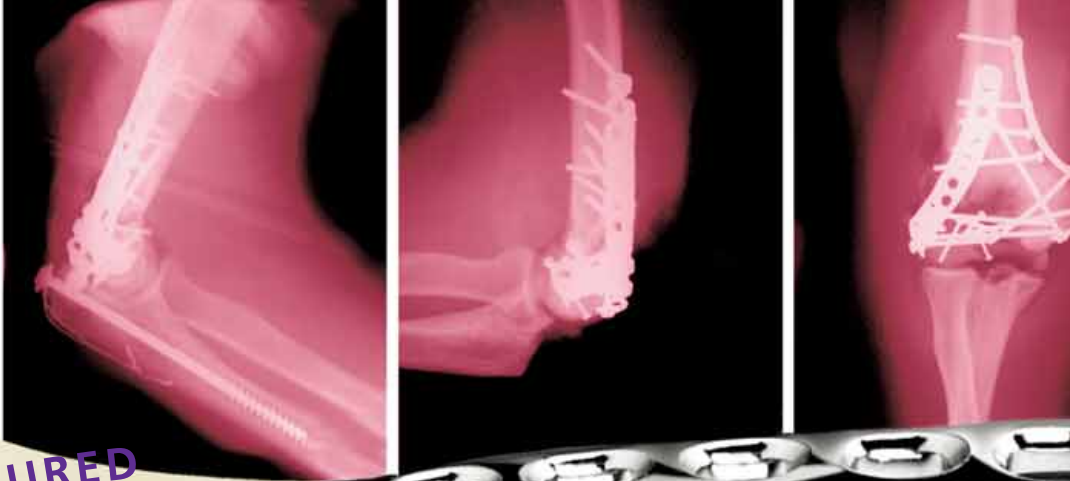


# Zimmer® Periarticular Plating System



Low-profile fixation

**ANATOMICALLY  
CONTOURED**



## PRECONTOURED PLATING

One of the most difficult challenges in the treatment of periarticular fractures is bending the plate to fit the specific profile of the bone. Conventional plating systems often require extensive intraoperative shaping to accommodate the

patient's bone geometry. The Periarticular Plating System is precontoured to closely follow the shape of the bone and create a fit that requires little or no additional bending.

Using digital laser bone scanning techniques, a broad range of cadaver bone sections was analyzed, allowing the Periarticular Plating System design team

to determine accurate implant contours. This data was then used to guide advanced fabricating technologies in the manufacture of precontoured implants. In most cases, the implants will fit without the need for further bending.

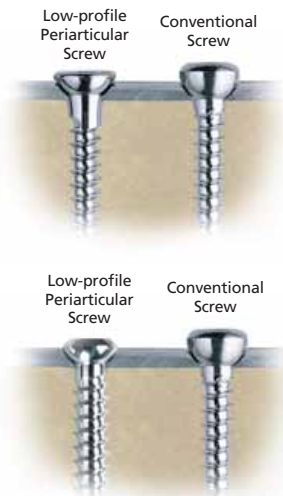
## LOW-PROFILE FIXATION

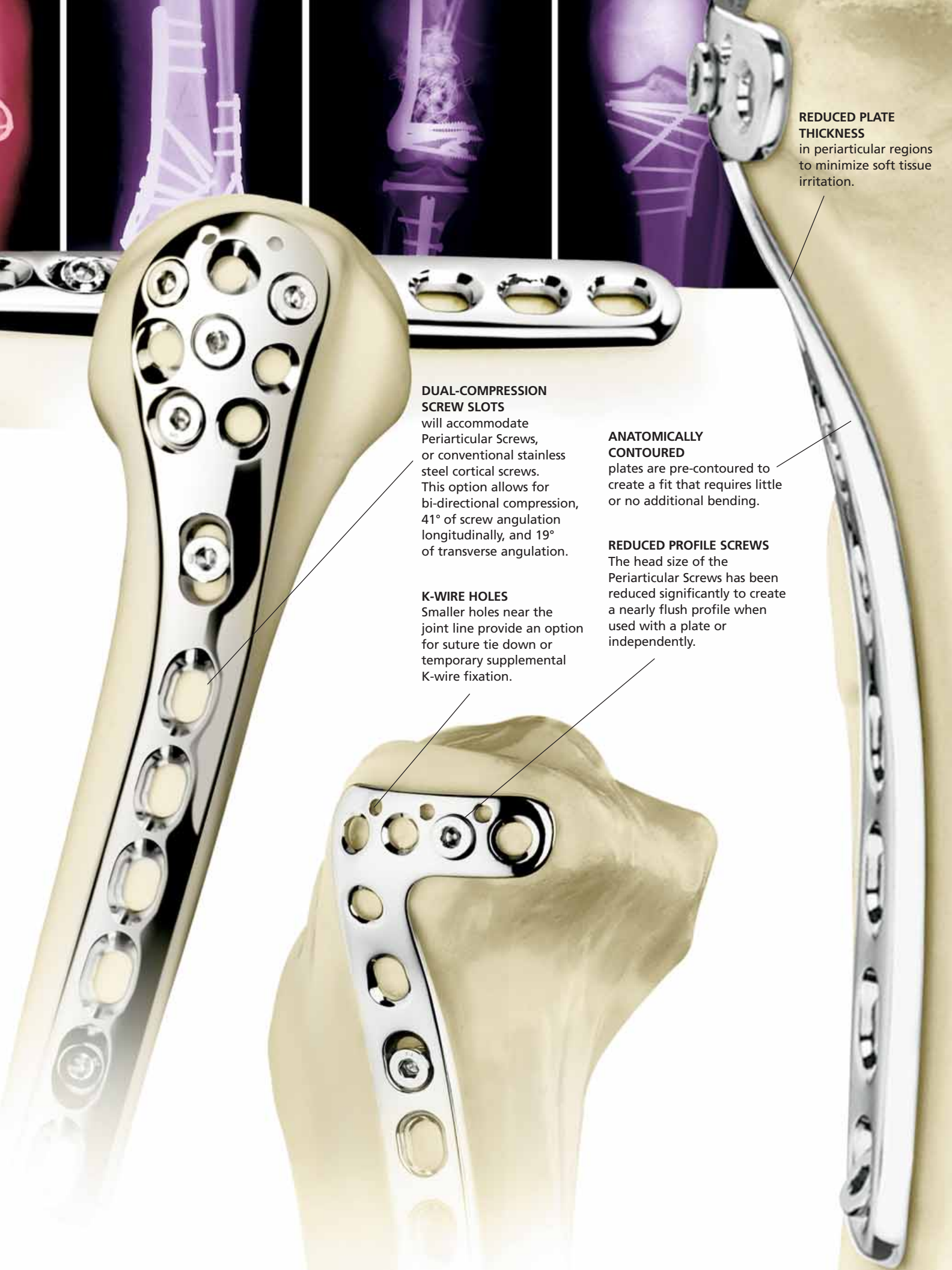
The plate thickness decreases toward the joint line to simplify additional contouring and reduce the potential for soft tissue irritation. This reduced thickness also allows the implant to "autocontour" to the bone as the screws draw the plate toward the bone. This reduces the need for bending and allows the surgeon to close the wound more easily.

The low-profile Periarticular Screws can be used with the Periarticular Plating System, with conventional stainless steel implants, or independently.



**ADVANCED  
FABRICATING  
TECHNOLOGIES**  
are guided by data from a digital laser scanner that helps to determine optimal implant contours.





**REDUCED PLATE THICKNESS**  
in periarticular regions to minimize soft tissue irritation.

**DUAL-COMPRESSION SCREW SLOTS**

will accommodate Periarticular Screws, or conventional stainless steel cortical screws. This option allows for bi-directional compression, 41° of screw angulation longitudinally, and 19° of transverse angulation.

**K-WIRE HOLES**

Smaller holes near the joint line provide an option for suture tie down or temporary supplemental K-wire fixation.

**ANATOMICALLY CONTOURED**

plates are pre-contoured to create a fit that requires little or no additional bending.

**REDUCED PROFILE SCREWS**

The head size of the Periarticular Screws has been reduced significantly to create a nearly flush profile when used with a plate or independently.

**PROXIMAL LATERAL HUMERAL PLATES**

3.5mm Proximal Lateral Humeral Plate				4.5mm Proximal Lateral Humeral Plate			
Left (3.5mm)	Right (3.5mm)	Plate Holes	Length	Left (4.5mm)	Right (4.5mm)	Plate Holes	Length
00-2348-002-02	00-2348-001-02	2	68mm	00-2348-004-02	00-2348-003-02	2	75mm
00-2348-002-04	00-2348-001-04	4	92mm	00-2348-004-04	00-2348-003-04	4	107mm
00-2348-002-06	00-2348-001-06	6	116mm	00-2348-004-06	00-2348-003-06	6	139mm
00-2348-002-08	00-2348-001-08	8	140mm	00-2348-004-08	00-2348-003-08	8	171mm
00-2348-002-10	00-2348-001-10	10	164mm	00-2348-004-10	00-2348-003-10	10	203mm
00-2348-002-12	00-2348-001-12	12	188mm	00-2348-004-12	00-2348-003-12	12	235mm
00-2348-002-14	00-2348-001-14	14	212mm				
00-2348-002-16	00-2348-001-16	16	236mm				

**DISTAL POSTERIOR/LATERAL HUMERAL PLATES**

Left	Right	Plate Holes	Length
00-2348-006-02	00-2348-005-02	2	49mm
00-2348-006-04	00-2348-005-04	4	70mm
00-2348-006-06	00-2348-005-06	6	91mm
00-2348-006-08	00-2348-005-08	8	111mm
00-2348-006-10	00-2348-005-10	10	132mm
00-2348-006-12	00-2348-005-12	12	153mm
00-2348-006-14	00-2348-005-14	14	174mm

**DISTAL MEDIAL HUMERAL PLATES**

Plate	Cat. No.	Plate Holes	Length
Small Distal Medial Humeral Plate	00-2348-007-12	12	79mm
Small Distal Medial Humeral Plate	00-2348-007-14	14	95mm
Small Distal Medial Humeral Plate	00-2348-007-16	16	111mm

**PROXIMAL DORSAL ULNAR PLATES**

Left	Right	Plate Holes	Length
00-2348-010-02	00-2348-009-02	2	48mm
00-2348-010-04	00-2348-009-04	4	68mm
00-2348-010-06	00-2348-009-06	6	89mm
00-2348-010-08	00-2348-009-08	8	110mm
00-2348-010-10	00-2348-009-10	10	131mm
00-2348-010-12	00-2348-009-12	12	152mm
00-2348-010-14	00-2348-009-14	14	173mm



**DISTAL DORSAL T RADIAL PLATES**

Plate	Left	Right	Plate Holes	Length
Small Distal Dorsal T Radial Plate	00-2348-022-02	00-2348-021-02	2	34mm
Small Distal Dorsal T Radial Plate	00-2348-022-03	00-2348-021-03	3	45mm
Small Distal Dorsal T Radial Plate	00-2348-022-04	00-2348-021-04	4	55mm
Small Distal Dorsal T Radial Plate	00-2348-022-06	00-2348-021-06	6	76mm
Small Distal Dorsal T Radial Plate	00-2348-022-08	00-2348-021-08	8	97mm
Small Distal Dorsal T Radial Plate	00-2348-022-10	00-2348-021-10	10	118mm
Small Distal Dorsal T Radial Plate	00-2348-022-12	00-2348-021-12	12	138mm



**DISTAL DORSAL DELTA RADIAL PLATES**

Plate	Left	Right	Plate Holes	Length
Small Distal Dorsal Delta Radial Plate	00-2348-026-01	00-2348-025-01	1	44mm
Small Distal Dorsal Delta Radial Plate	00-2348-026-02	00-2348-025-02	2	55mm
Small Distal Dorsal Delta Radial Plate	00-2348-026-04	00-2348-025-04	4	75mm
Small Distal Dorsal Delta Radial Plate	00-2348-026-06	00-2348-025-06	6	96mm
Small Distal Dorsal Delta Radial Plate	00-2348-026-08	00-2348-025-08	8	117mm
Small Distal Dorsal Delta Radial Plate	00-2348-026-10	00-2348-025-10	10	138mm



**DISTAL VOLAR RADIAL PLATES – LATERAL COLUMN**

Plate	Left	Right	Plate Holes	Length
Small Distal Volar Radial Plate – Lateral Column	00-2348-014-02	00-2348-013-02	2	32mm
Small Distal Volar Radial Plate – Lateral Column	00-2348-014-03	00-2348-013-03	3	43mm
Small Distal Volar Radial Plate – Lateral Column	00-2348-014-04	00-2348-013-04	4	54mm
Small Distal Volar Radial Plate – Lateral Column	00-2348-014-06	00-2348-013-06	6	74mm
Small Distal Volar Radial Plate – Lateral Column	00-2348-014-08	00-2348-013-08	8	95mm
Small Distal Volar Radial Plate – Lateral Column	00-2348-014-10	00-2348-013-10	10	116mm
Small Distal Volar Radial Plate – Lateral Column	00-2348-014-12	00-2348-013-12	12	137mm



**DISTAL VOLAR ULNAR RADIAL PLATES – MEDIAL COLUMN**

Plate	Left	Right	Plate Holes	Length
Small Distal Volar Ulnar Radial Plate – Medial Column	00-2348-018-02	00-2348-017-02	2	33mm
Small Distal Volar Ulnar Radial Plate – Medial Column	00-2348-018-03	00-2348-017-03	3	44mm
Small Distal Volar Ulnar Radial Plate – Medial Column	00-2348-018-05	00-2348-017-05	5	64mm
Small Distal Volar Ulnar Radial Plate – Medial Column	00-2348-018-07	00-2348-017-07	7	85mm





### ***DISTAL LATERAL FEMORAL PLATES***

<b>Plate</b>	<b>Left</b>	<b>Right</b>	<b>Plate Holes</b>	<b>Length</b>
Distal Lateral Femoral Plate	00-2347-002-06	00-2347-001-06	6	147mm
Distal Lateral Femoral Plate	00-2347-002-08	00-2347-001-08	8	178mm
Distal Lateral Femoral Plate	00-2347-002-10	00-2347-001-10	10	210mm
Distal Lateral Femoral Plate	00-2347-002-12	00-2347-001-12	12	242mm
Distal Lateral Femoral Plate	00-2347-002-14	00-2347-001-14	14	273mm
Distal Lateral Femoral Plate	00-2347-002-16	00-2347-001-16	16	305mm
Distal Lateral Femoral Plate	00-2347-002-18	00-2347-001-18	18	336mm



### ***4.5MM DISTAL MEDIAL FEMORAL PLATES***

<b>Plate</b>	<b>Left</b>	<b>Right</b>	<b>Plate Holes</b>	<b>Length</b>
4.5mm Distal Medial Femoral Plate	00-2347-032-02	00-2347-031-02	2	73mm
4.5mm Distal Medial Femoral Plate	00-2347-032-04	00-2347-031-04	4	105mm
4.5mm Distal Medial Femoral Plate	00-2347-032-06	00-2347-031-06	6	137mm
4.5mm Distal Medial Femoral Plate	00-2347-032-08	00-2347-031-08	8	169mm



### ***3.5MM PROXIMAL MEDIAL TIBIAL PLATES***

### ***4.5MM PROXIMAL MEDIAL TIBIAL PLATES***

<b>Left</b>	<b>Right</b>	<b>Plate Holes</b>	<b>Length</b>	<b>Left</b>	<b>Right</b>	<b>Plate Holes</b>	<b>Length</b>
00-2347-012-04	00-2347-011-04	4	59mm	00-2347-014-04	00-2347-013-04	4	81mm
00-2347-012-06	00-2347-011-06	6	82mm	00-2347-014-06	00-2347-013-06	6	113mm
00-2347-012-08	00-2347-011-08	8	106mm	00-2347-014-08	00-2347-013-08	8	145mm
00-2347-012-10	00-2347-011-10	10	130mm	—	—	—	—



### ***3.5MM PROXIMAL LATERAL TIBIAL PLATES***

### ***4.5MM PROXIMAL LATERAL TIBIAL PLATES***

<b>Left</b>	<b>Right</b>	<b>Plate Holes</b>	<b>Length</b>	<b>Left</b>	<b>Right</b>	<b>Plate Holes</b>	<b>Length</b>
—	—	—	—	00-2347-006-02	00-2347-005-02	2	43mm
00-2347-004-04	00-2347-003-04	4	59mm	00-2347-006-04	00-2347-005-04	4	74mm
00-2347-004-06	00-2347-003-06	6	83mm	00-2347-006-06	00-2347-005-06	6	105mm
00-2347-004-08	00-2347-003-08	8	107mm	00-2347-006-08	00-2347-005-08	8	137mm
00-2347-004-10	00-2347-003-10	10	131mm	00-2347-006-10	00-2347-005-10	10	169mm
00-2347-004-12	00-2347-003-12	12	154mm	00-2347-006-12	00-2347-005-12	12	201mm
00-2347-004-14	00-2347-003-14	14	178mm	00-2347-006-14	00-2347-005-14	14	233mm
00-2347-004-16	00-2347-003-16	16	202mm	—	—	—	—

**DISTAL LATERAL TIBIAL PLATES****DISTAL MEDIAL TIBIAL PLATES**

Left	Right	Plate Holes	Length	Left	Right	Plate Holes	Length
00-2347-010-04	00-2347-009-04	4	61mm	00-2347-008-04	00-2347-007-04	4	96mm
00-2347-010-06	00-2347-009-06	6	85mm	00-2347-008-06	00-2347-007-06	6	120mm
00-2347-010-08	00-2347-009-08	8	109mm	00-2347-008-08	00-2347-007-08	8	144mm
00-2347-010-10	00-2347-009-10	10	133mm	00-2347-008-10	00-2347-007-10	10	168mm
00-2347-010-12	00-2347-009-12	12	157mm	00-2347-008-12	00-2347-007-12	12	192mm
00-2347-010-14	00-2347-009-14	14	181mm	00-2347-008-14	00-2347-007-14	14	216mm
00-2347-010-16	00-2347-009-16	16	205mm	00-2347-008-16	00-2347-007-16	16	240mm
00-2347-010-18	00-2347-009-18	18	229mm	00-2347-008-18	00-2347-007-18	18	264mm
00-2347-010-20	00-2347-009-20	20	253mm	00-2347-008-20	00-2347-007-20	20	288mm

**DISTAL POSTERIOR/LATERAL FIBULAR PLATES**

Plate	Left	Right	Plate Holes	Length
Distal Posterior/Lateral Fibular Plate	00-2347-016-02	00-2347-015-02	2	51mm
Distal Posterior/Lateral Fibular Plate	00-2347-016-04	00-2347-015-04	4	74mm
Distal Posterior/Lateral Fibular Plate	00-2347-016-06	00-2347-015-06	6	95mm
Distal Posterior/Lateral Fibular Plate	00-2347-016-08	00-2347-015-08	8	116mm
Distal Posterior/Lateral Fibular Plate	00-2347-016-10	00-2347-015-10	10	136mm
Distal Posterior/Lateral Fibular Plate	00-2347-016-12	00-2347-015-12	12	157mm
Distal Posterior/Lateral Fibular Plate	00-2347-016-14	00-2347-015-14	14	178mm
Distal Posterior/Lateral Fibular Plate	00-2347-016-16	00-2347-015-16	16	199mm
Distal Posterior/Lateral Fibular Plate	00-2347-016-18	00-2347-015-18	18	220mm
Distal Posterior/Lateral Fibular Plate	00-2347-016-20	00-2347-015-20	20	241mm

**DISTAL LATERAL FIBULAR PLATES**

Plate	Left	Right	Plate Holes	Length
Distal Lateral Fibular Plate	00-2347-018-02	00-2347-017-02	2	51mm
Distal Lateral Fibular Plate	00-2347-018-04	00-2347-017-04	4	73mm
Distal Lateral Fibular Plate	00-2347-018-06	00-2347-017-06	6	94mm
Distal Lateral Fibular Plate	00-2347-018-08	00-2347-017-08	8	115mm
Distal Lateral Fibular Plate	00-2347-018-10	00-2347-017-10	10	135mm
Distal Lateral Fibular Plate	00-2347-018-12	00-2347-017-12	12	156mm
Distal Lateral Fibular Plate	00-2347-018-14	00-2347-017-14	14	177mm
Distal Lateral Fibular Plate	00-2347-018-16	00-2347-017-16	16	198mm
Distal Lateral Fibular Plate	00-2347-018-18	00-2347-017-18	18	219mm
Distal Lateral Fibular Plate	00-2347-018-20	00-2347-017-20	20	239mm

**LATERAL CALCANEAL PLATES**

Plate	Cat No.
Lateral Calcaneal Plate-Right	00-2347-035-00
Lateral Calcaneal Plate-Left	00-2347-036-00





2.7mm Cortical Bone Screw



Periarticular 3.5mm Cortical Bone Screw with 2.7mm Head



Periarticular 3.5mm Self-Tapping Cortical Bone Screw



Forte® 4.0mm Partially Threaded Cancellous Bone Screw



Forte 4.0mm Fully Threaded Cancellous Bone Screw



Periarticular 4.0mm Cancellous Bone Screw (20mm Thread Length)



Periarticular 4.0mm Cancellous Bone Screw (Fully Threaded)



Periarticular 4.5mm Self-Tapping Cortical Bone Screw



Periarticular 6.5mm Cancellous Bone Screw (16mm Thread Length)



Periarticular 6.5mm Cancellous Bone Screw (32mm Thread Length)



Periarticular 6.5mm Cancellous Bone Screw (Fully Threaded)

### BONE SCREW OPTIONS

Screw Type	Cat No.	Length Options (mm)
2.7mm Cortical Bone Screws Self-Tapping	00-4827-0mm-01	6, 7, 8, 9, 10, 12, 14, 16, 18, 20, 22, 24, 26, 28, 30, 32, 34, 36, 38, 40, 42, 44, 46, 48, 50, 52, 54, 56, 58, 60, 65, 70
Periarticular 3.5mm Cortical Self-Tapping Bone Screws with 2.7mm Head	00-2348-mmm-35	8, 10, 12, 14, 16, 18, 20, 22, 24, 26, 28, 30, 32, 34, 36, 38, 40, 42, 44, 46, 48, 50, 52, 54, 56, 58, 60, 65, 70, 75, 80, 85, 90, 95, 100, 105, 110*
Periarticular 3.5mm Self-Tapping Cortical Bone Screws	00-2347-020-mm	10, 12, 14, 16, 18, 20, 22, 24, 26, 28, 30, 32, 34, 36, 38, 40, 42, 44, 46, 48, 50, 55, 60, 65, 70, 75, 80, 85, 90, 95
	00-2347-120-mm	100, 105, 110, 115, 120, 125, 130, 135, 140, 145, 150*
Forte 4.0mm Partially Threaded Cancellous Bone Screws	00-2480-0mm-40	10, 12, 14, 16, 18, 20, 22, 24, 26, 28, 30, 32, 34, 36, 38, 40
Forte 4.0mm Fully Threaded Cancellous Bone Screws	00-2480-0mm-41	10, 12, 14, 16, 18, 20, 22, 24, 26, 28, 30, 32, 34, 36, 38, 40
Periarticular 4.0mm Cancellous Bone Screws (partially threaded)	00-2347-021-mm	10, 12, 14, 16, 18, 20, 22, 24, 26, 28, 30, 35, 40, 45, 50, 55, 60
	00-2347-022-mm (full thread)	10, 12, 14, 16, 18, 20, 22, 24, 26, 28, 30, 32, 34, 36, 38, 40, 45, 50, 55, 60
Periarticular 4.5mm Self-Tapping Cortical Bone Screws	00-2347-023-mm	26, 28, 30, 32, 34, 36, 38, 40, 42, 44, 46, 48, 50, 55, 60, 65, 70, 75, 80, 85, 90, 95
	00-2347-123-mm	100, 105, 110, 115, 120, 125, 130, 135, 140, 145, 150*
Periarticular 6.5mm Cancellous Bone Screws	00-2347-024-mm (16mm thread)	30, 35, 40, 45, 50, 55, 60, 65, 70, 75, 80, 85, 90, 95
	00-2347-124-mm (16mm thread)	100, 105, 110, 115, 120, 125, 130, 135, 140, 145, 150*
	00-2347-025-mm (32mm thread)	45, 50, 55, 60, 65, 70, 75, 80, 85, 90, 95
	00-2347-125-mm (32mm thread)	100, 105, 110, 115, 120, 125, 130, 135, 140, 145, 150*
	00-2347-026-mm (full thread)	25, 30, 35, 40, 45, 50, 55, 60, 65, 70, 75, 80, 85, 90, 95
	00-2347-126-mm (full thread)	100, 105, 110, 115, 120, 125, 130, 135, 140, 145, 150*

\* For lengths of 100mm or greater, drop the initial "1" of the length to identify the corresponding catalog number (For example: Instead of using 2347-120-105, the correct order number is 00-2347-120-05).

WARNING: This device is not approved for screw attachments or fixation to the posterior elements (pedicles) of the cervical, thoracic, or lumbar spine.



Contact your Zimmer representative or visit us at [www.zimmer.com](http://www.zimmer.com)

